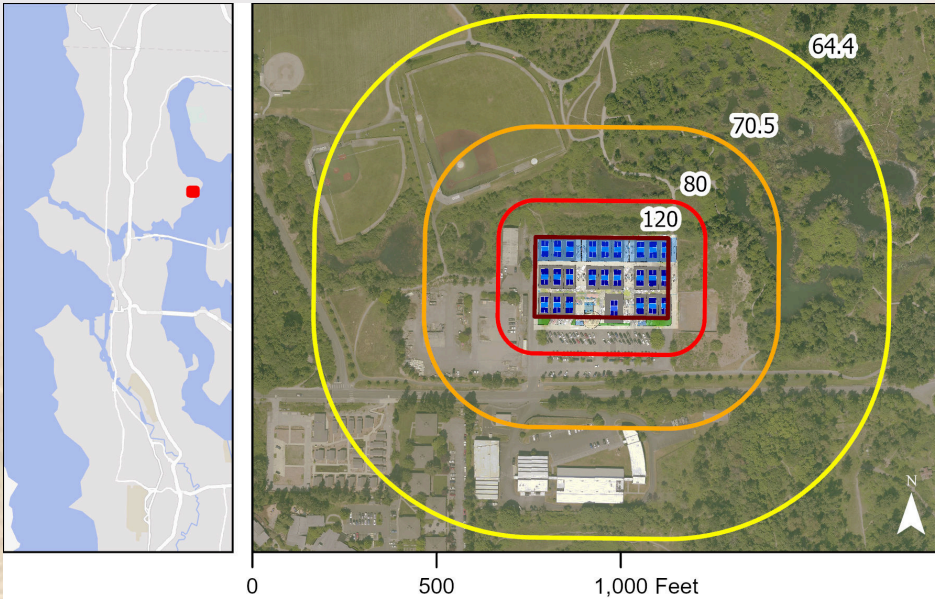




# PROTECT THE MAGNUSON PARK WETLANDS

Seattle Parks & Rec plans to build a 25-court, outdoor pickleball facility next to the Magnuson Park wetlands.



Map showing the proposed location and potential design of the pickleball facility.

Sound levels from pickleball can reach 120 decibels courtside (darkest red). Under ideal conditions, sound levels could be 80 decibels 100 feet away from the courts (red), 70.5 decibels 300 feet away (orange), and 64.4 decibels 600 feet away (yellow), still more than 2.7 times louder than typical background noise.

Pickleball is noisy. Even standing 100 feet away, eight courts in use can be as loud as freeway traffic. Noise is a known environmental pollutant. It doesn't make sense to build a loud pickleball facility next to protected wetland habitat.

**For the sake of sensitive wetland species and the people who visit this urban oasis, let's find another location for the pickleball facility.**

Sign the Petition



Learn More

